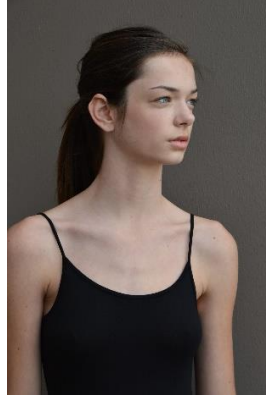
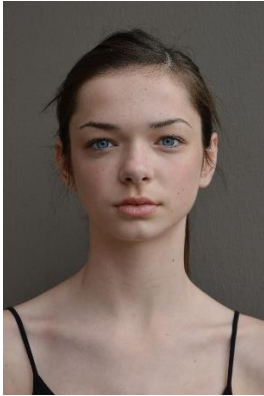




Snapshot Instructions



Step 1: Prepare. Make sure you are wearing little to no makeup. Hair should be down and natural, for longer hair have a ponytail holder handy so that you can wear it out of your faces for a few photos. Clothing should be form fitting. For women a fitted black tank, skinny jeans and heels. Men can wear fitted jeans and a t shirt.

Step 2: Location. Good light is key! Do not use a flash. Make sure there is enough natural light and try to find a plain white or grey wall to stand in front of. You will not want to be in direct sunlight, as it will create harsh shadows. Parking garages, allies, garage doors, walls inside that are opposite large windows are all examples of a good location.

Step 3: Angles. Try getting a few photos framing the shoulders up and include one straight on and one of both profiles. Then you will repeat the same framing the waist up and then full-length. Try replicating some of the poses in the examples if you need help.

Step 4: Submit. These photos are sent to our team for review. They are never used for any other purpose then determining interest in the potential model. Send them directly to your scout and we will get back to you as soon as possible.

